

Solenoid operated valves pilot operated poppet type
2-way normally closed double lock proximity sensor
Special cavity, 017-E

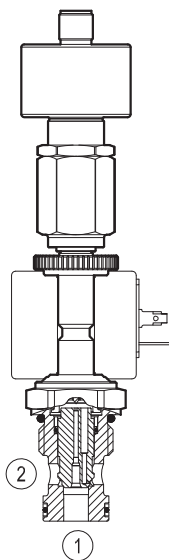
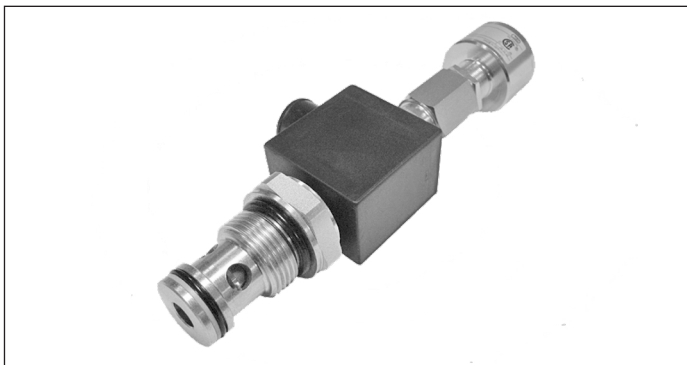
VESP-12G-12A/00-2T31-N7

OD.15.31.17.65.01 - Z Replaces: 08.2020

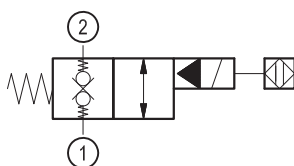
RE 18325-17

Edition: 09.2021

Replaces: 08.2020



▼ Version 31



Technical data

General	
Weight	0.75 kg (1.7 lbs)
Installation orientation	Optional
Ambient temperature range	-25 to 60 °C (-13 to 140 °F)
Hydraulic	
Max. operating pressure	350 bar (5000 psi)
Flow range	2.5-70 l/min (0.66 - 18 gpm)
Max. internal leakage	15 drops/min.
Fluid temperature range	-20 to 80 °C (-4 to 176 °F)
Fluids: Mineral-based or synthetics with lubricating properties at viscosities of 15 to 380 mm ² /s (cSt)	
Installation torque	50 - 55 Nm (37 - 41 ft-lbs)
Recommended degree of fluid contamination	Nominal value max. 10 µm (NAS 8) ISO 4406 19/17/14
MTTFD	150 years see RE 18350-51
DC	90% * according to ISO 13849-1/2
Special cavity	017-E see 18325-70
Lines bodies and standard assemblies	Please refer to section "Hydraulic integrated circuit" or consult factory
Seal kit – version 31	code material no. RG17E201053010 R934003563
Other technical data	See data sheet 18350-50

Electrical	
Type of voltage	DC voltage
Coil type	S8-356 see 18325-90
Supply voltage	See data sheet 18325-90
Nominal voltage	± 10%
Power consumption	20 W
Duty cycle coil	100 % see 18325-90
Type of protection	See data sheet 18325-90

Please consider that a proper function of the valve is guaranteed only if the position of the monitor is not modified; each cartridge is provided of a torque confirmation mark, intended as anti-tampering device.

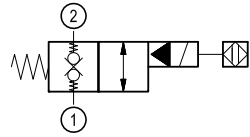
Sensor is protected against short circuit polarity inversion.

* For more details contact factory

Ordering code

OD.15	31	17	6501	Z
-------	----	----	------	---

Solenoid operated valves
pilot operated poppet type
2-way normally closed double lock proximity sensor



OC 24 V DC

Note: please consult factory for different voltages.

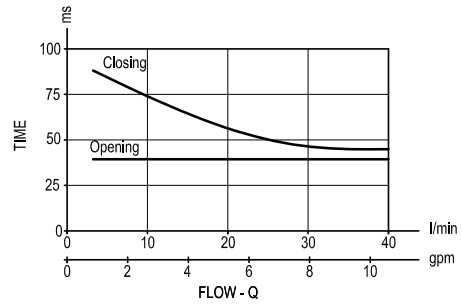
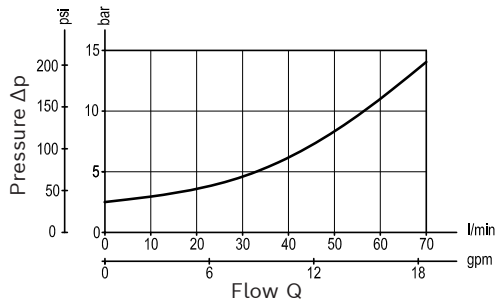
Special cavity: 017-E

Type	Material number
OD1531176501OC	R934004749

Type	Material number

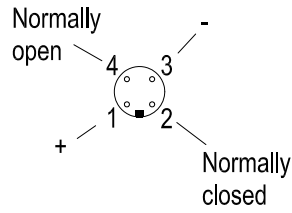
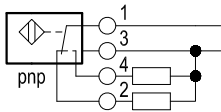
Characteristic curves

Version 31



Sensor data:

	24 V DC
Supply voltage	20 to 32
Output load	≤ 400 mA



Dimensions**▼ Version 31: Solenoid operated valve, poppet 2-way normally closed double lock proximity sensor**